

# Lead Prevention THE UNIVERSITY of TENNESSEE Extension and Healthy Housing Newsletter

Family and Consumer Sciences

Volume 5 Number 1

2009

## CPSIA:

Section 108:  
Phthalates

Section 101:  
Lead Content  
Lead Paint

Questions?  
Comments?  
Assistance Needed?

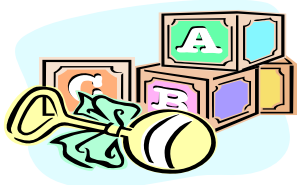
Please contact:

**BONNIE HINDS**  
Extension Assistant  
Environmental  
Health Programs  
119 Morgan Hall  
Knoxville, TN  
37996-4501

**865-974-8178**

E-Mail:  
[bhinds@utk.edu](mailto:bhinds@utk.edu)

## Consumer Product Safety Improvement Act (CPSIA):



### Limitations on Phthalates and Lead in Children's Products

The new legislation, which defines allowable limits of phthalates and lead in both children's toys and children's "care articles," became effective on February 10, 2009, with additional restrictions to be enacted on August 14, 2009. Phthalate and lead content will be severely restricted in toys designed for children aged 12 and under, as well as in products related to sleeping, feeding, sucking, or teething for children aged three and under.

#### What are Phthalates?

Phthalates are chemical substances used primarily in the manufacture of consumer plastics to render plastic durable and flexible. Six specific phthalates are included in Section 108 of the CPSIA: DEHP, DBP, BBP, DINP, DIDP, and DnOP. The Safety Improvement Act defines the maximum allowable amount of any of these six substances at 0.1% or below.

While research on the effect of phthalates on human health continues, existing evidence suggests the chemicals may negatively impact both male and female reproductive systems.

Further information on Section 108 (phthalate restrictions) is available on the Consumer Product Safety Commission's website at:

<http://www.cpsc.gov/about/cpsia/faq/108faq.html>

#### Lead Restrictions:

Section 101 of the CPSIA addresses lead content and lead paint restrictions. As of February 10, 2009, no children's toys or "care articles" may be manufactured or sold if they exceed the limits of **600 ppm** (parts per million). On August 14, 2009, the acceptable limit will be reduced to **300 ppm**. As of August 14, accredited third-party laboratories must confirm the lead content of all manufactured children's items.

(continued on Page 2)



**Haven't Worn It—or  
Them--  
in at Least a Year?**

**Donate clean,  
used clothing and  
shoes to  
Goodwill, the  
Salvation Army, or  
Habit for Humanity.**



**Donate used  
eyeglasses to  
local Lions Clubs.**

**[http://www.  
lionsclubs.org/  
EN/content/vision\\_  
eyeglass\\_centers.  
shtml#](http://www.lionsclubs.org/EN/content/vision_eyeglass_centers.shtml#)**

### **Lead Paint Restrictions** (continued from Page 1):

Currently, liquid paint may legally contain up to 600 ppm of lead. The allowable content will be dramatically reduced to **90 ppm**, effective August 14, 2009. The paint limitations will be imposed upon children's toys and furnishings (e.g., cribs, bookcases, tables, dressers, etc.). As with the testing for lead content, lead paint, too, must be certified by an accredited third-party laboratory.

Moreover, The Consumer Product Safety Improvement Act prohibits the sale of any children's products manufactured before February 10, 2009, if they violate the 600 ppm lead maximum.

A comprehensive list of frequently asked questions related to the CPSIA's ruling on lead content and lead paint can be found online at:

<http://www.cpsc.gov/about/cpsia/faq/101faq.html>

## **"GREEN" Facts and Observances**

Everyone's home and lawn can benefit from reevaluation each spring. What better time to consider the three Rs of a green lifestyle?

**REDUCE  
REUSE  
RECYCLE**

Two national observances are scheduled in April to help Americans **RE-FOCUS** on the merits of a green home and lifestyle:

## **EARTH DAY 2009 is Wednesday, April 22**



First celebrated on April 22, 1970, Earth Day commemorates Americans' commitment to conservation and environmental awareness.

According to the Earthday Network, more than 20 million Americans flooded their parks and neighborhoods on April 22, 1970, showing their support for the burgeoning environmental movement. Now enjoying its 39<sup>th</sup> anniversary, Earth Day remains closely associated with the agency it spawned: the Environmental Protection Agency, signed into existence by President Richard Nixon on July 9, 1970.

The mission of protecting America's precious natural resources has never been more important . . . .

**Environmental  
WEBSITES:**

<http://ww2.earthday.net>

<http://www.arborday.org>

<http://www.kab.org>

[http://www.neefusa  
.org](http://www.neefusa.org)

[http://www.  
conservacion.org](http://www.conservaion.org)



**TREES**

by Joyce Kilmer

I think that I shall  
never see  
A poem lovely  
as a tree.

A tree whose hungry  
mouth is prest  
Against the sweet  
earth's flowing breast.

A tree that looks at  
God all day,  
And lifts her leafy  
arms to pray.

A tree that may in  
summer wear  
A nest of robins in her  
hair;

Upon whose bosom snow  
has lain;  
Who intimately lives  
with rain.

Poems are made by  
fools like me,  
But only God can make  
a tree.



**ABOR DAY 2009 is Friday, April 24**

**Reducing** energy consumption can be as simple and pleasant as planting trees. According to the US Forest Service, "trees properly placed around buildings can reduce air conditioning needs by 30 percent and can save 20-50 percent in energy used for heating." Moreover, trees help to improve water quality, "resulting in less runoff and erosion . . . and [a] recharging of the ground water supply."

For more information, visit

<http://www.arborday.org/trees/benefits.cfm>

*Arbor Day Trivia . . .*



In December of 2004, the oak was named (by Congress and the President) as America's "national tree." This followed a public voting process whereby the oak handily beat its closest competitors—the redwood, dogwood, maple, and pine—to win the title.

**TN CLPPP Advisory Committee:**

The Spring meeting of the TN CLPPP Advisory Committee will be held at the Mid-Cumberland Regional Health Office in Nashville on **Friday, April 24, 2009**, from 9:30 AM – 11:30 AM Central Standard Time.